

**DISTRICT COURT - CSRBA**  
**Fifth Judicial District**  
**County of Twin Falls - State of Idaho**

**JUN 10 2022**

By \_\_\_\_\_ Clerk  
 \_\_\_\_\_ Deputy Clerk

IN THE DISTRICT COURT OF THE FIFTH JUDICIAL DISTRICT OF THE  
 STATE OF IDAHO, IN AND FOR THE COUNTY OF TWIN FALLS

In Re CSRBA ) PARTIAL DECREE PURSUANT TO I.R.C.P. 54(b)  
 Case No. 49576 ) FOR FEDERAL RESERVED  
 )  
 ) WATER RIGHT NO. 94-09532C

NAME AND ADDRESS: UNITED STATES OF AMERICA ACTING THROUGH  
 USDA FOREST SERVICE  
 550 W FORT ST MSC 033  
 BOISE ID 83724

SOURCE: See Attachment 1, Column A TRIBUTARY: See Attachment 1, Column B

Sources are located on National Forest System Land in the Steamboat Creek subwatershed (HUC12 170103010703).

QUANTITY: The amount of water necessary to control and suppress forest fires.

PRIORITY DATE: 12/23/1932

POINT OF DIVERSION: See Attachment 1, Columns C through G

PURPOSE AND PERIOD OF USE: PURPOSE OF USE                      PERIOD OF USE  
 Administrative-Fire Suppression                      01/01 - 12/31

PLACE OF USE: National Forests in Idaho and the Kaniksu, Lolo and Kootenai National Forests in Montana.  
 See Attachment 2.


OTHER PROVISIONS NECESSARY FOR DEFINITION OR ADMINISTRATION OF THIS WATER RIGHT:

This right is limited to the intermittent diversion and use of water for the purpose of suppressing wildfires. This water right shall not be used as a basis to prevent the future appropriation of water.

This partial decree is subject to such general provisions necessary for the definition of the rights or for the efficient administration of the water rights as may be ultimately determined by the Court at a point in time no later than the entry of a final unified decree. Idaho Code § 42-1412(6).

RULE 54(b) CERTIFICATE

With respect to the issues determined by the above partial judgment it is hereby CERTIFIED, in accordance with Rule 54(b), I.R.C.P., that the court has determined that there is no just reason for delay of the entry of a final judgment and that the court has and does hereby direct that the above partial judgment is a final judgment upon which execution may issue and an appeal may be taken as provided by the Idaho Appellate Rules.

  
 \_\_\_\_\_  
 Eric J. Wildman  
 Presiding Judge of the  
 Coeur d'Alene-Spokane River Adjudication

Attachment 1

	A	B	C	D	E	F	G
1	SOURCE NAME	TO TRIBUTARY	TOWNSHIP	RANGE	SECTION	QQ	SURVEY CODE AND NUMBER
2	Unnamed Stream	Steamboat Creek	50N	02E	3	NENW	L 3
3	Steamboat Creek	North Fork Coeur d'Alene River	50N	02E	3	NENW	L 3
4	Unnamed Stream	Steamboat Creek	50N	02E	3	NENW	L 3
5	Steamboat Creek	North Fork Coeur d'Alene River	50N	02E	3	NESE	
6	Unnamed Stream	Steamboat Creek	50N	02E	3	NESW	
7	Unnamed Stream	Steamboat Creek	50N	02E	3	NESW	
8	East Fork Steamboat Creek	Steamboat Creek	50N	02E	3	NWNW	L 4
9	Unnamed Stream	Steamboat Creek	50N	02E	3	NWNW	L 4
10	Steamboat Creek	North Fork Coeur d'Alene River	50N	02E	3	NWNW	L 4
11	Unnamed Stream	Steamboat Creek	50N	02E	3	NWNW	L 4
12	West Fork Steamboat Creek	Steamboat Creek	50N	02E	3	NWNW	L 4
13	Unnamed Stream	Steamboat Creek	50N	02E	3	NWSE	
14	Steamboat Creek	North Fork Coeur d'Alene River	50N	02E	3	SENW	
15	Unnamed Stream	Steamboat Creek	50N	02E	3	SENW	
16	Unnamed Stream	Steamboat Creek	50N	02E	3	SENW	
17	Unnamed Stream	Steamboat Creek	50N	02E	3	SESW	
18	Steamboat Creek	North Fork Coeur d'Alene River	50N	02E	3	SWNW	
19	Unnamed Stream	Steamboat Creek	50N	02E	3	SWNW	
20	Unnamed Stream	West Fork Steamboat Creek	50N	02E	4	NENE	L 1
21	West Fork Steamboat Creek	Steamboat Creek	50N	02E	4	NENE	L 1
22	Unnamed Stream	West Fork Steamboat Creek	50N	02E	4	NWNW	L 2
23	Unnamed Stream	West Fork Steamboat Creek	50N	02E	4	NWNE	L 2
24	West Fork Steamboat Creek	Steamboat Creek	50N	02E	4	NWNE	L 2
25	Unnamed Stream	Steamboat Creek	50N	02E	4	SENE	
26	Unnamed Stream	West Fork Steamboat Creek	50N	02E	4	SWNE	
27	Unnamed Stream	West Fork Steamboat Creek	50N	02E	4	SWNE	
28	Unnamed Stream	Steamboat Creek	50N	02E	11	SESW	
29	Unnamed Stream	Omaha Creek	50N	02E	14	NENW	
30	Unnamed Stream	Steamboat Creek	50N	02E	14	NENW	
31	Steamboat Creek	North Fork Coeur d'Alene River	50N	02E	14	NWNE	
32	Unnamed Stream	Steamboat Creek	50N	02E	14	NWNE	

Attachment 2  
 Place of Use Map Fire Suppression - Water Right No. 94-09532C  
 National Forests in Idaho and the Kaniksu, Lolo and Kootenai NF in Montana

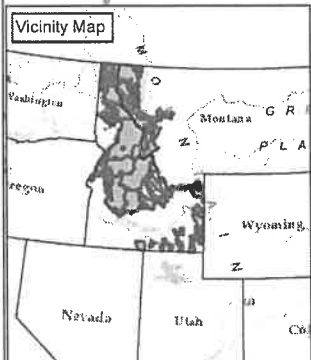
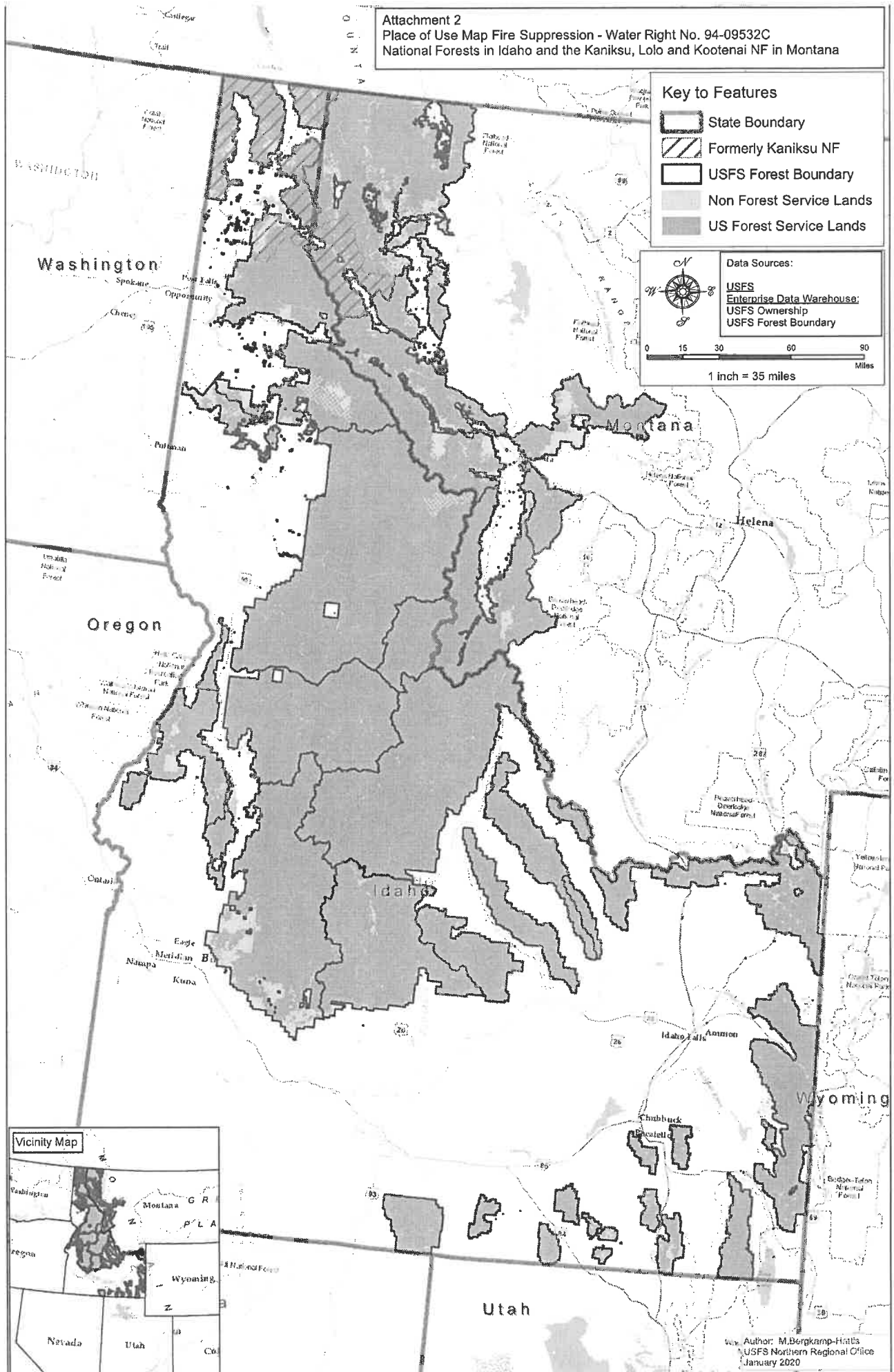
**Key to Features**

- State Boundary
- Formerly Kaniksu NF
- USFS Forest Boundary
- Non Forest Service Lands
- US Forest Service Lands

**Data Sources:**

- USFS
- Enterprise Data Warehouse:
- USFS Ownership
- USFS Forest Boundary

0 15 30 60 90 Miles  
 1 inch = 35 miles



Author: M. Bergkamp-Holtz  
 USFS Northern Regional Office  
 January 2020